



WARRANTY REGISTRATION

FLEXSCREEN, LLC LIMITED WARRANTY

Your FlexScreen carries a limited lifetime warranty for any defects that arise that would prevent the product from effectively deterring the entry of insects into your home. This limited warranty is valid only for the original consumer purchaser ("the Consumer") and is not transferable to any subsequent purchaser. No limited warranty service is available without registering your FlexScreen within 30 days of retail purchase.

FlexScreen, LLC ("Warrantor") will repair or replace, at its option, this product during the limited warranty period, subject to the exclusions and limitations set forth herein. Any replacement will be made with a new product. If the product is no longer available, replacement may be made with a similar product of equal or greater value. This is your exclusive limited warranty.

Should any failure covered by this limited warranty occur, the Consumer must provide proof of the failure to Warrantor. This may require the Consumer to deliver or ship the product to FlexScreen, LLC. All freight, packaging and transportation charges, including costs associated with any shipment of the product to Warrantor and any shipment of the repaired or replacement product back to the Consumer, will be borne by the Consumer. In order to be eligible for repair or replacement under this warranty, you MUST return the warranty registration card within 30 days of purchasing your FlexScreen. Keep the original sales receipt. Proof of purchase is required to obtain warranty performance. Retailers do not have the right to alter, modify, or in any way change the terms and conditions of this limited warranty.

WARRANTOR SHALL NOT BE LIABLE FOR ANY INCIDENTAL OR CONSEQUENTIAL DAMAGES. EXCEPT TO THE EXTENT PROHIBITED BY APPLICABLE LAW, ANY IMPLIED WARRANTY OF MERCHANTABILITY OR FITNESS FOR A PARTICULAR PURPOSE OR OTHERWISE IS LIMITED IN DURATION TO THE DURATION OF THE ABOVE LIMITED WARRANTY. THERE ARE NO EXPRESS WARRANTIES OTHER THAN THOSE SET FORTH HEREIN. SOME STATES, PROVINCES OR JURISDICTIONS DO NOT ALLOW THE EXCLUSION OR LIMITATION OF INCIDENTAL OR CONSEQUENTIAL DAMAGES OR LIMITATIONS ON HOW LONG AN IMPLIED WARRANTY LASTS, SO THE ABOVE LIMITATIONS OR EXCLUSIONS MAY NOT APPLY TO YOU. THIS WARRANTY GIVES YOU SPECIFIC LEGAL RIGHTS, AND YOU MAY ALSO HAVE OTHER RIGHTS THAT VARY FROM STATE TO STATE.

WAYS TO REGISTER YOUR WARRANTY: [Warranty is void if not registered within 30 days of purchase.]

ONLINE at www.flexscreenwarranty.com

E-MAIL copies of the completed product registration card and FlexScreen receipt or sales contract to: warranty@flexscreen.com

MAIL completed product registration card along with a copy of FlexScreen receipt or sales contract to:
FLEXSCREEN, LLC 4491 School Road South Murrysville PA 15632

PRODUCT REGISTRATION

NAME (FIRST AND LAST)

EMAIL ADDRESS

STREET ADDRESS

PHONE NUMBER

CITY

CONTRACT/SALES ORDER NUMBER

STATE/PROVINCE/REGION

RETAILER NAME

ZIP/POSTAL CODE

NUMBER OF SCREENS

WARRANTY CODE: MKOTA



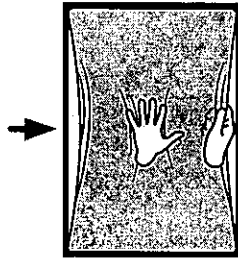
FULL-SCREEN REMOVAL GUIDE

THE WORLD'S FIRST FLEXIBLE WINDOW SCREEN

Begin by opening or tilting both sashes of your window toward the inside of the house to expose the window screen track.

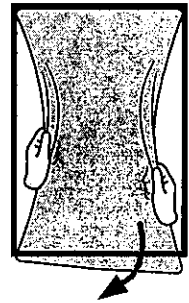
STEP 1

Gently press the palm of your hand in the center of the screen until you can wrap your hands around the FlexScreen frame. Squeeze both sides inward 4"-6".



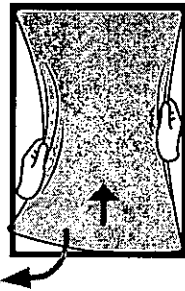
STEP 3

Remove the opposite bottom corner from the screen track.



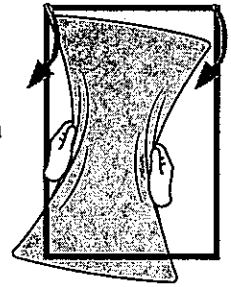
STEP 2

While keeping the sides compressed, lift up the FlexScreen and remove one of the bottom corners from the screen track.




STEP 4

With both corners out of the screen track, pull FlexScreen down from the top screen track and remove the screen.



CONTACT US TODAY: flexscreen.net

 Visit our website to watch FlexScreen in action



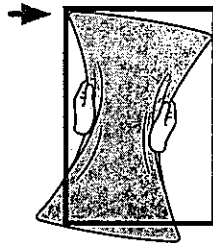
FULL-SCREEN INSTALLATION GUIDE

THE WORLD'S FIRST FLEXIBLE WINDOW SCREEN

Begin by opening or tilting both sashes of your window toward the inside of the house to expose the window screen track. Wrap your hands around FlexScreen's longest sides, squeeze the sides together 4"-6", and feed it completely through the window opening.

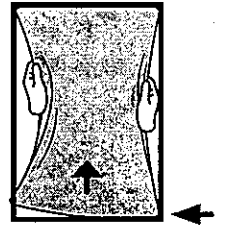
STEP 1

While keeping the sides compressed, aim FlexScreen's first corner to one of the top corners of the window screen track and seat it into the track.



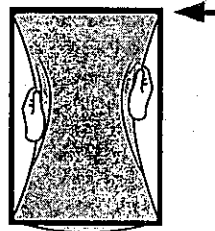
STEP 3

Keeping both sides squeezed together, insert FlexScreen into one of the bottom corners. It may help to lift slightly if your window has a lip on the sill. Release this side of the screen once it has been seated.



STEP 2

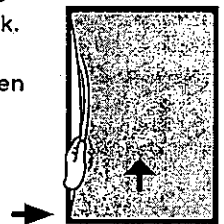
Aim the second corner to the opposite top corner of the window screen track and guide it into the track.



STEP 4

Aim FlexScreen's last corner into the remaining corner of the screen track. Lifting slightly may be helpful for this step as well. Release FlexScreen completely once all corners are seated properly.

Close your window and enjoy your completely uninterrupted view!



CONTACT US TODAY: flexscreen.net

▶ Visit our website to watch FlexScreen in action